



Construction

Pump casing with suction and delivery connections with the same diameter and on the same axis (in-line).

Materials:

Pump casing	Cast iron
Impeller	Stainless steel
Shaft	Stainless steel

Applications

For clean liquids, without abrasives, which are non-aggressive for the pump materials (contents of solids up to 0.2%).

For heating, conditioning, cooling and circulation plants.

For civil and industrial applications.

When low noise operation is required.

Operating conditions

Liquid temperature from -10 °C to +120 °C (in short-time duty up to + 140 °C).

Ambient temperature up to 40 °C.

Maximum glycol quantity: 50% (Mixture with more than 20% glycol content require rechecking of the pumping data).

Maximum permissible working pressure 6/10 bar.

TYPE	Minimum suction pressure: bar		
	Temperature		
	50 °C	80 °C	110 °C
NC 40	0,05	0,8	1,4
NC 50	0,3	1	1,6
NC 65	0,3	1	1,6
NC 80	0,3	1	1,6

Motor

2-4-pole induction motor, 50 Hz.
Three adjustable speeds.

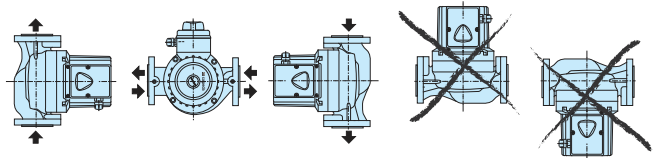
NC: three-phase 230V or 400 V.

NCM: single-phase 230 V.

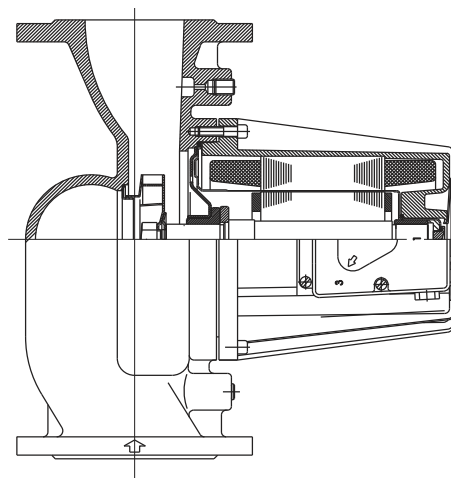
Insulation class H.

Protection IP 43.

Installation



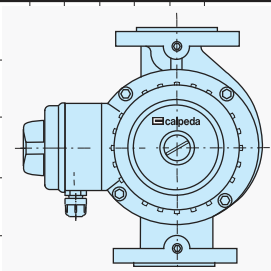
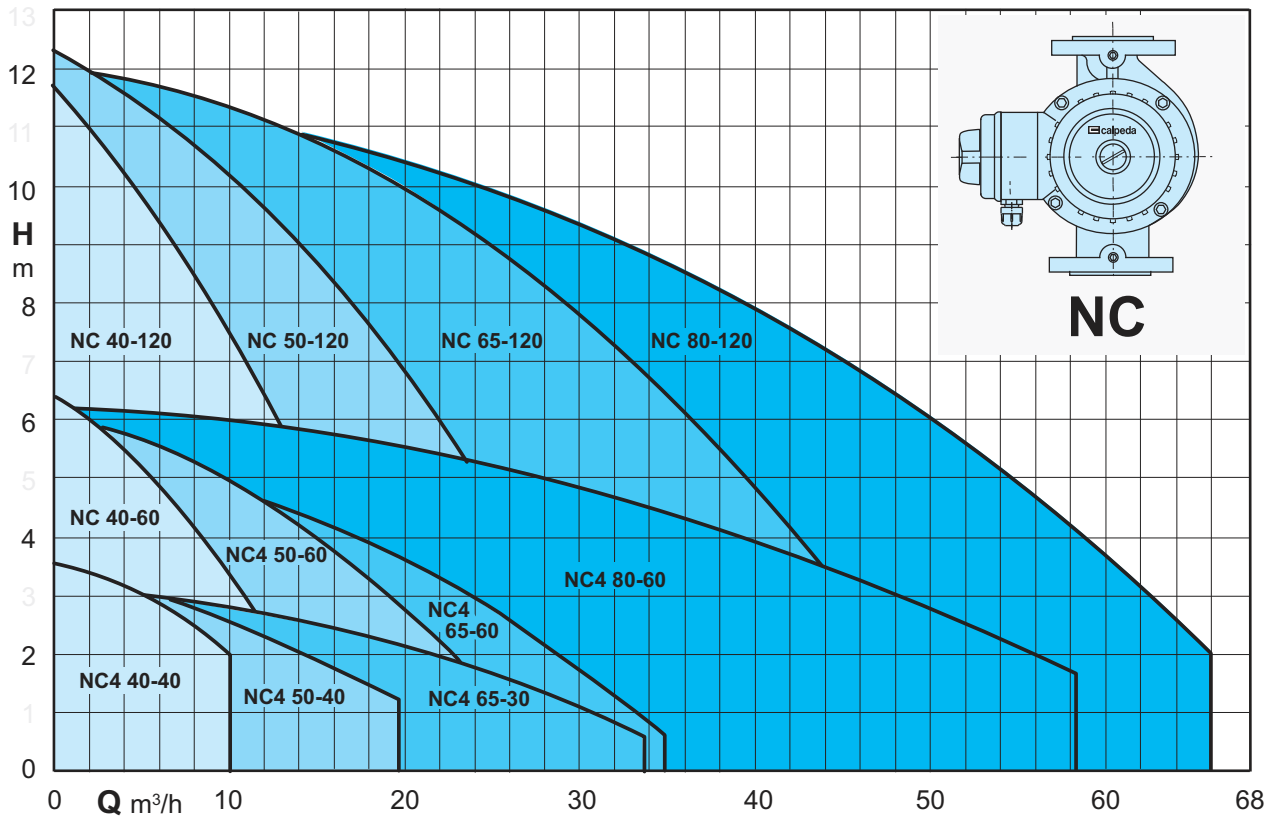
Cross section drawings



Designation

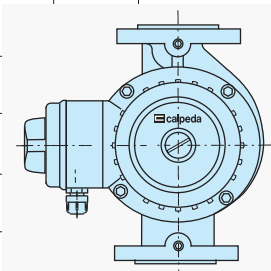
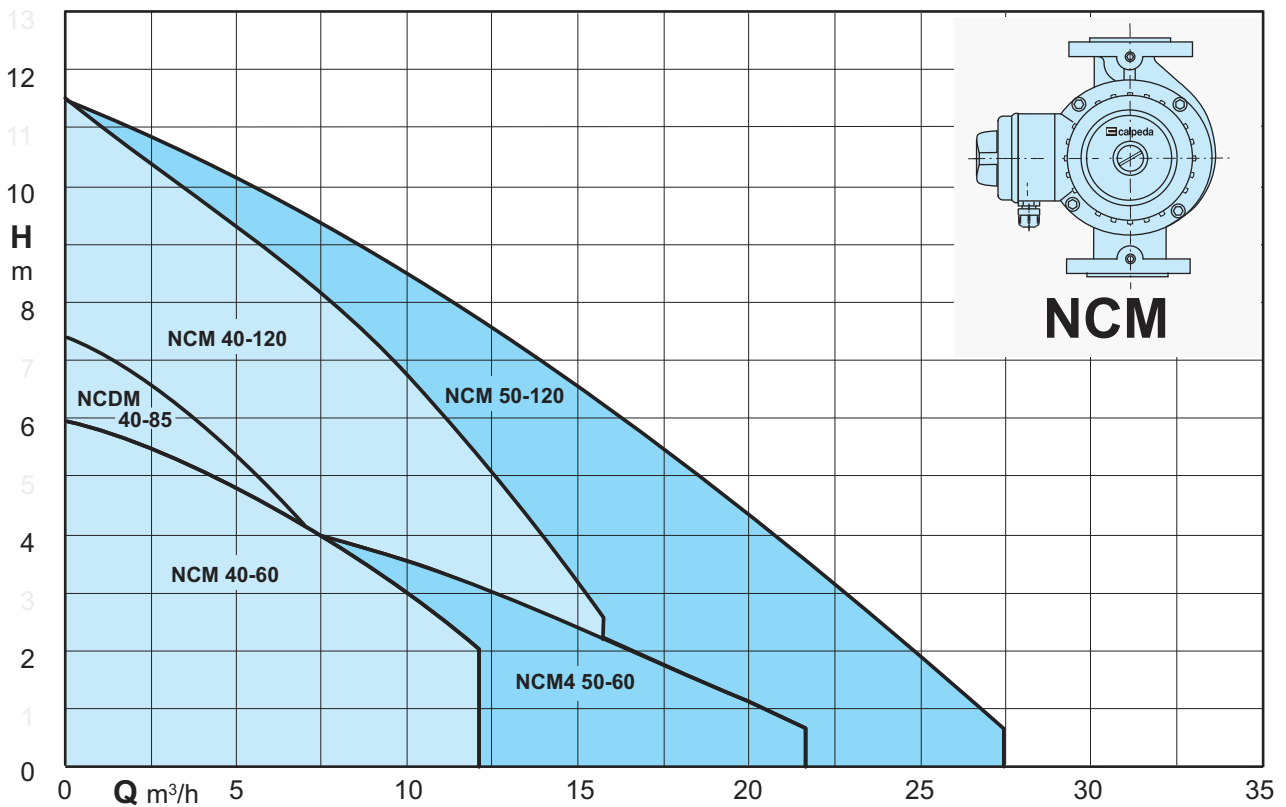
Series	NC (M)
Single-phase motor	4
4-pole motor	40
DN ports in mm	60
Max. head in dm	250
connection size mm	

Coverage chart



NC

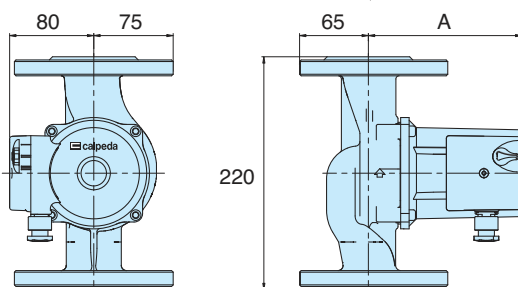
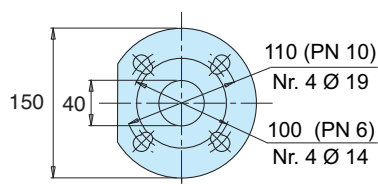
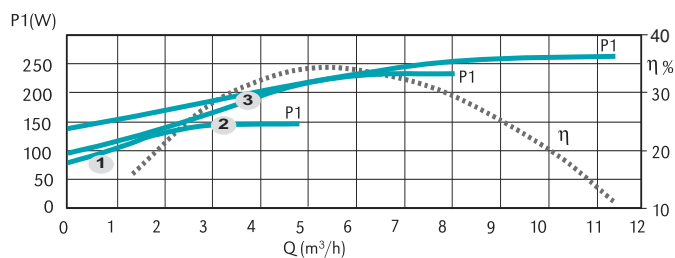
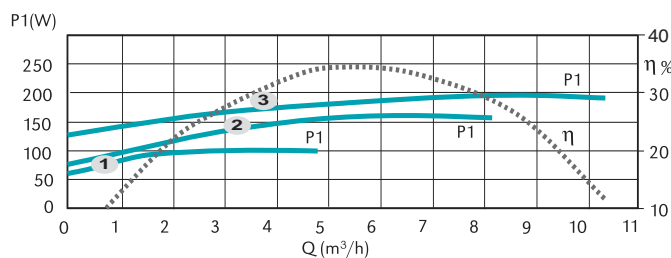
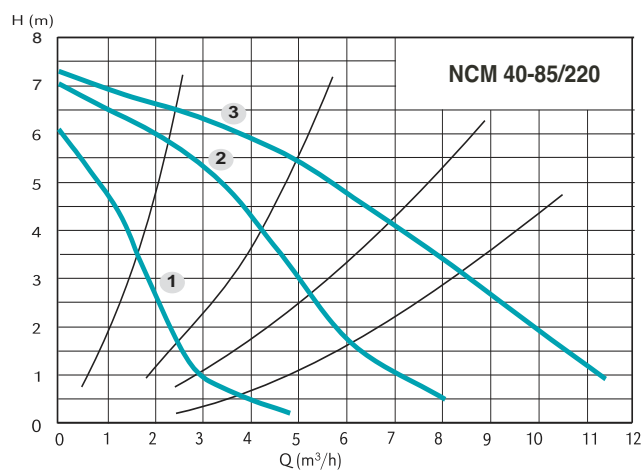
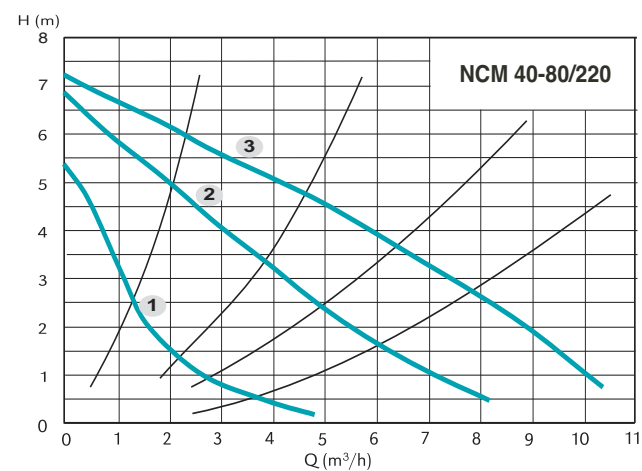
Tolerances according to ISO 9906, annex A.



NCM

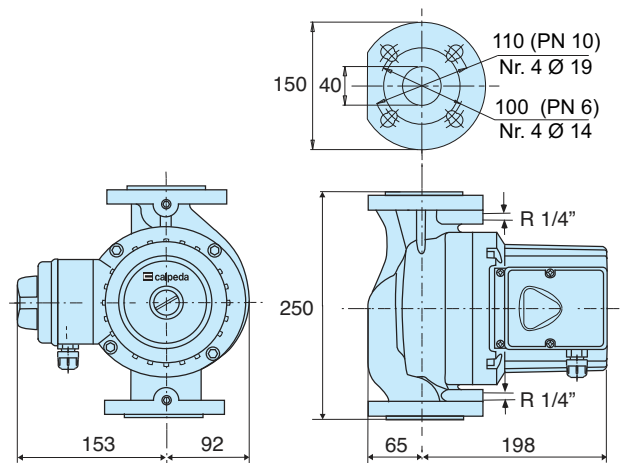
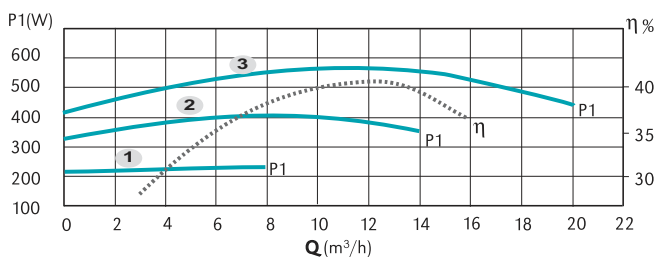
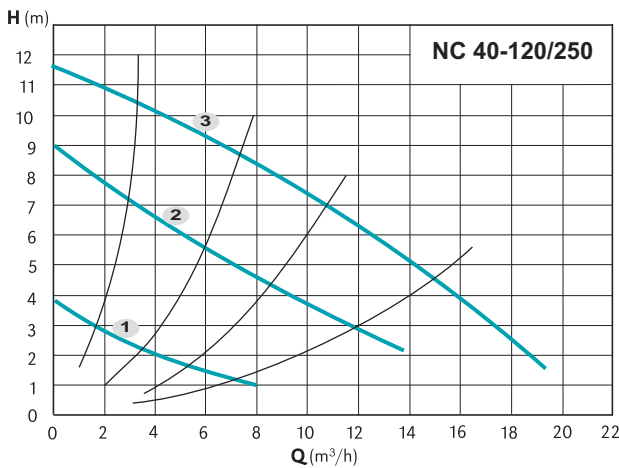
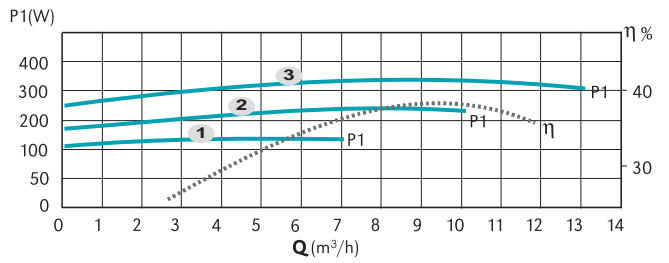
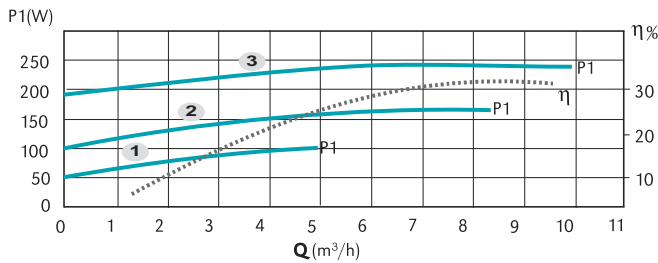
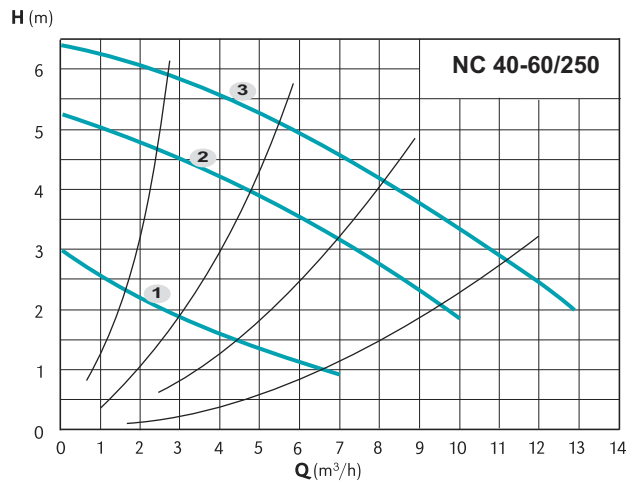
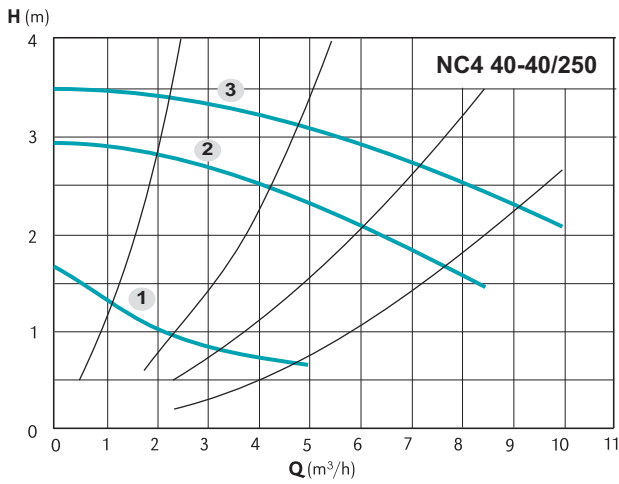
Tolerances according to ISO 9906, annex A.

Characteristic curves, dimensions and weights



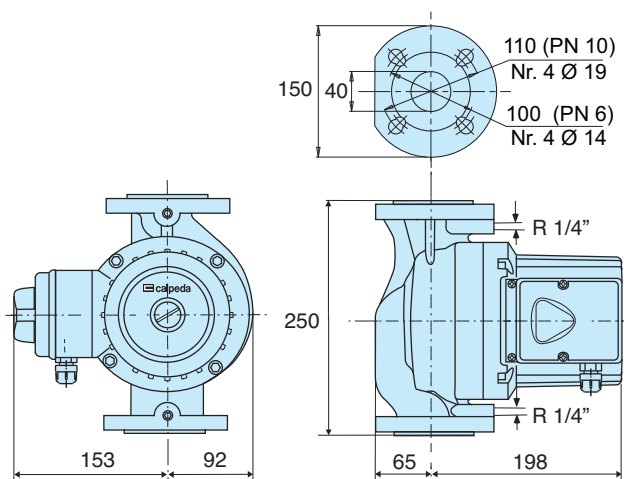
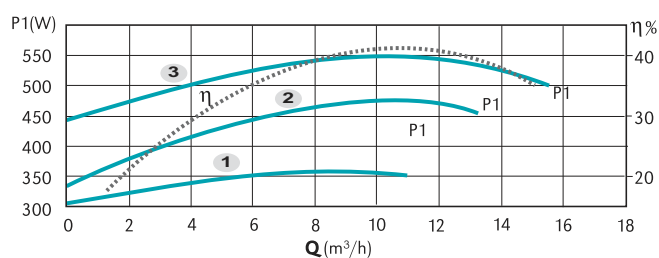
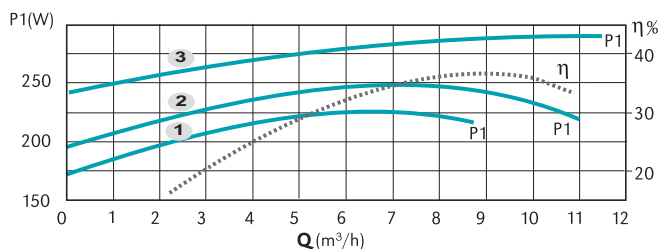
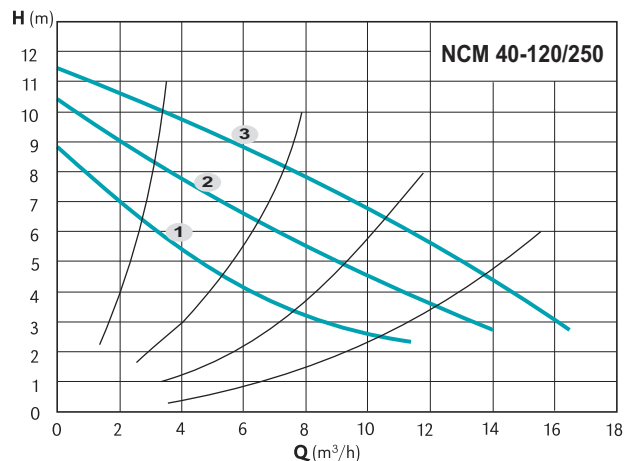
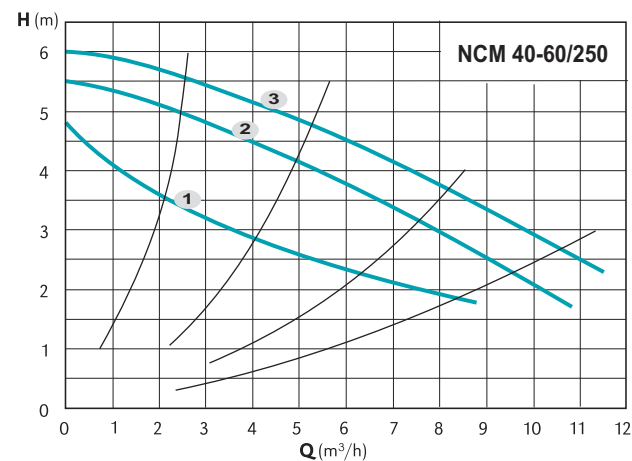
TYPE	DN PN		N° Poli		Pos.	P1 (W)	1x 230 V [A]	A [mm]	[kg]
	2	4	2	4					
NCM 40-80/220	40	6/10	✓		3	206	0,91	150	8,1
					2	185	0,88		
					1	120	0,60		
NCM 40-85/220	40	6/10	✓		3	277	1,20	175	8,8
					2	250	1,16		
					1	172	0,85		

Characteristic curves, dimensions and weights



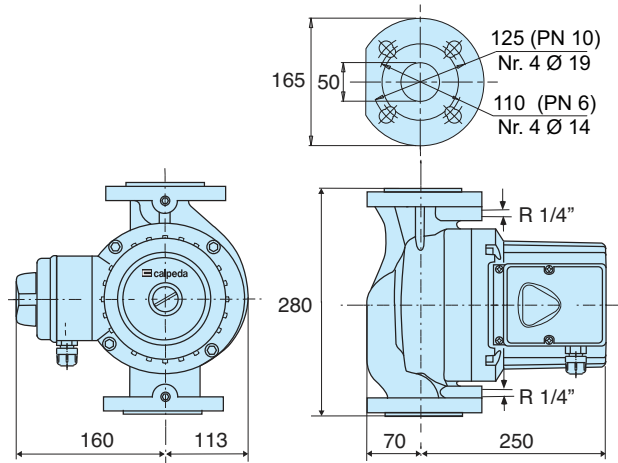
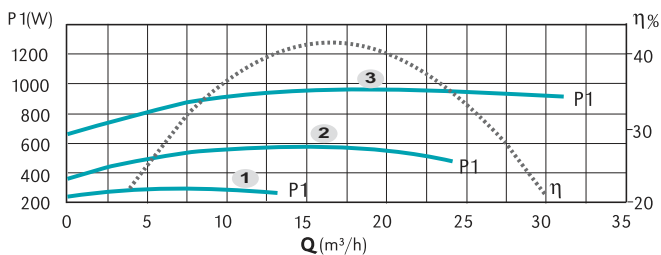
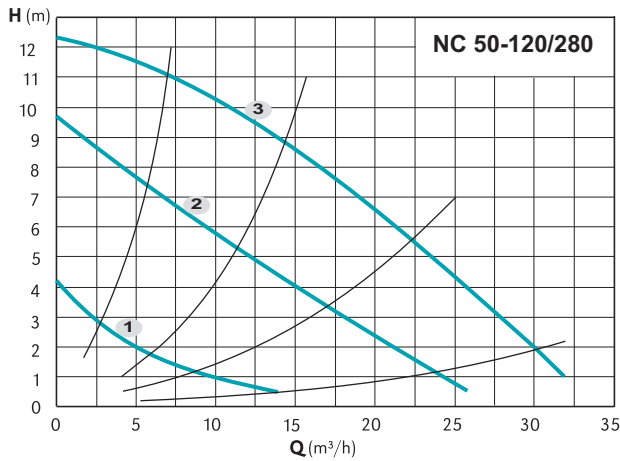
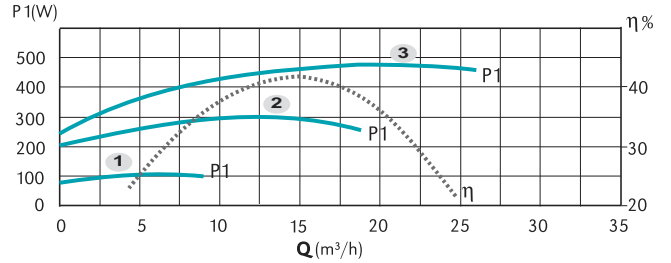
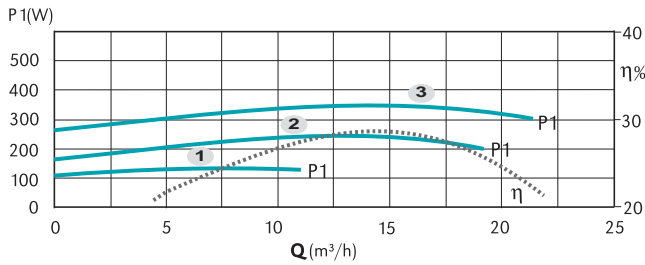
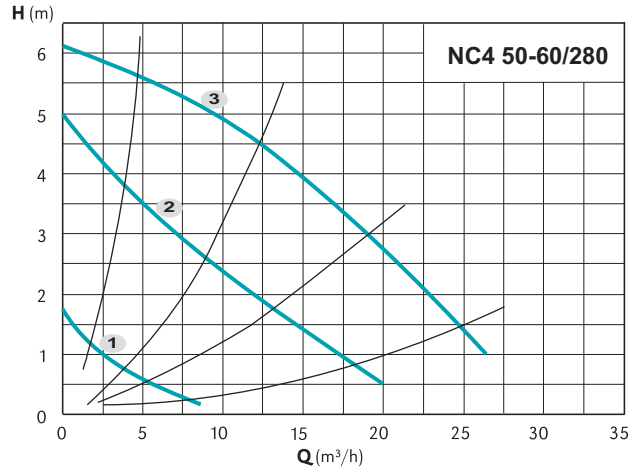
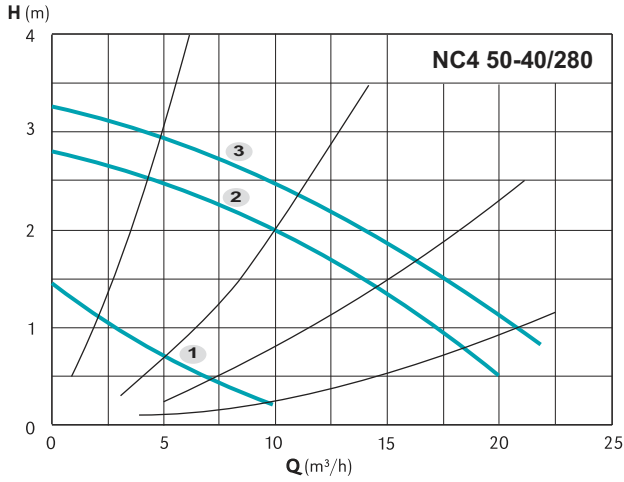
TYPE	DN	PN	N° Poli	Pos.	1/min	P1 (W)	3x 400 V [A]	[kg]
NC4 40-40/250	40	6/10	✓	3	1440	240	0,76	17,0
				2	1200	160	0,24	
				1	660	100	0,11	
NC 40-60/250	40	6/10	✓	3	2790	320	0,74	17,5
				2	2240	240	0,36	
				1	1440	140	0,18	
NC 40-120/250	40	6/10	✓	3	2820	560	1,16	19,0
				2	2200	400	0,64	
				1	1250	220	0,26	

Characteristic curves, dimensions and weights



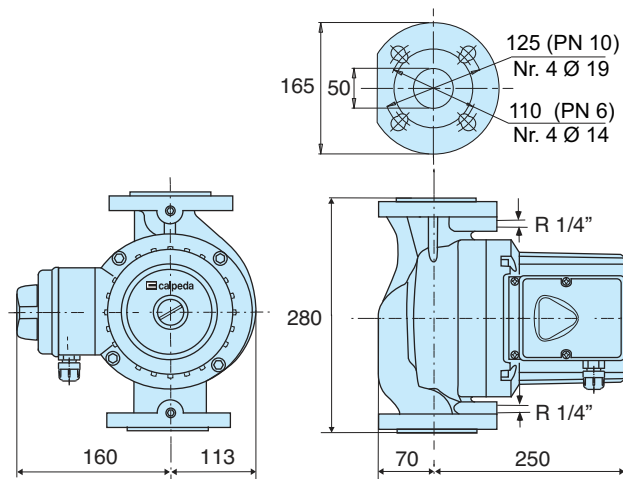
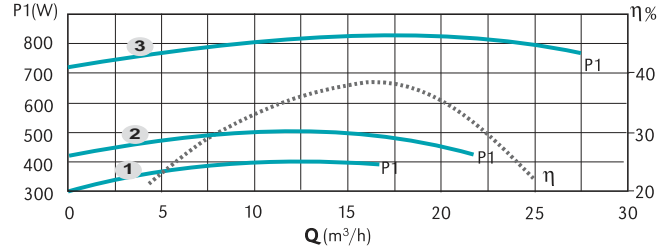
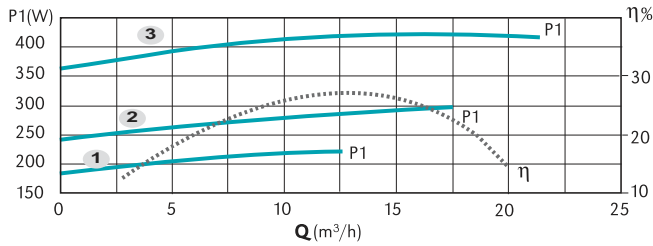
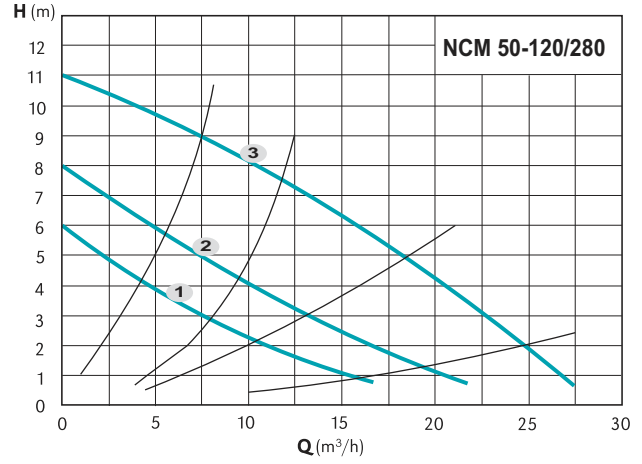
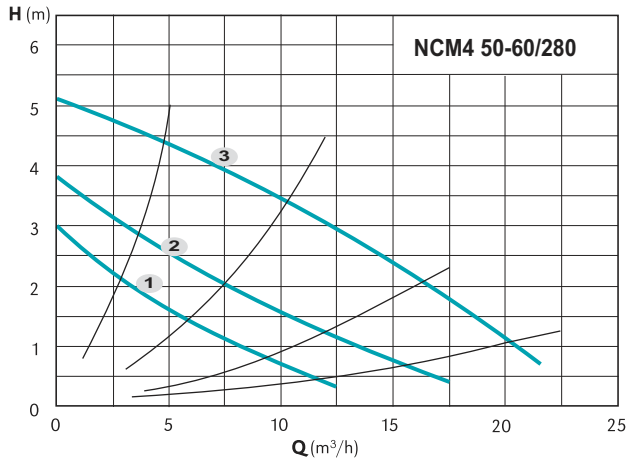
TYPE	DN PN		N° Poli 2 4	Pos.	1/min	P1 (W)	1x 230 V [A]	[kg]
	DN	PN						
NCM 40-60/250	40	6/10	✓	3	2690	285	1,20	17,5
				2	2360	245	1,18	
				1	1820	225	1,15	
NCM 40-120/250	40	6/10	✓	3	2750	550	2,35	19,0
				2	2100	475	2,30	
				1	1270	355	1,85	

Characteristic curves, dimensions and weights



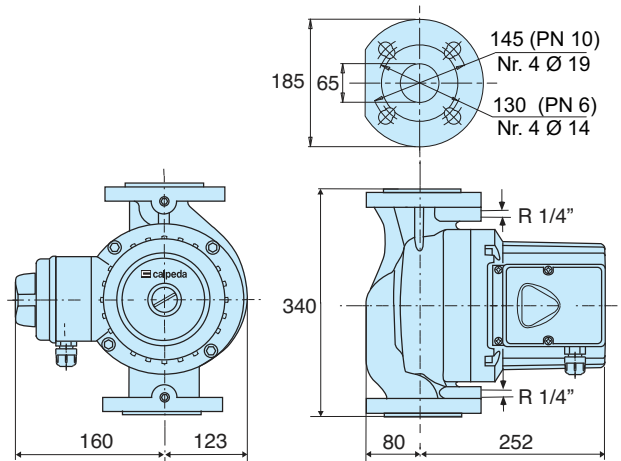
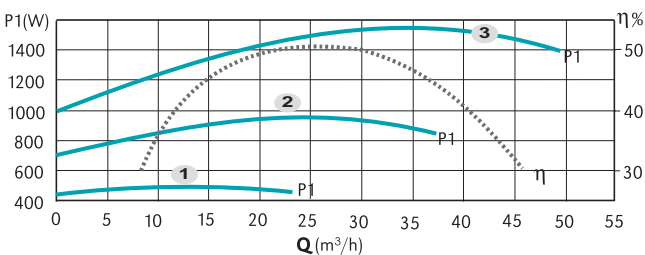
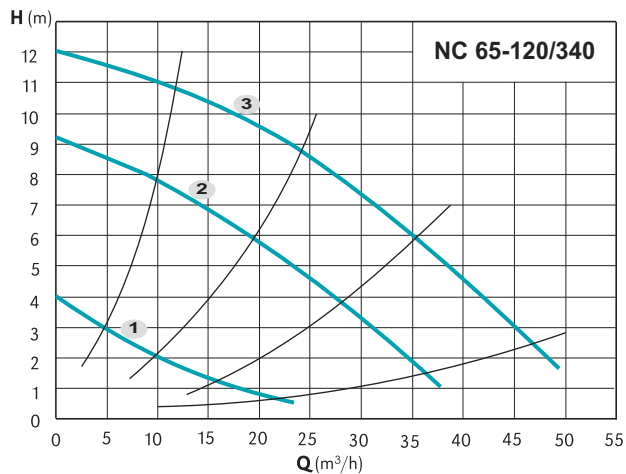
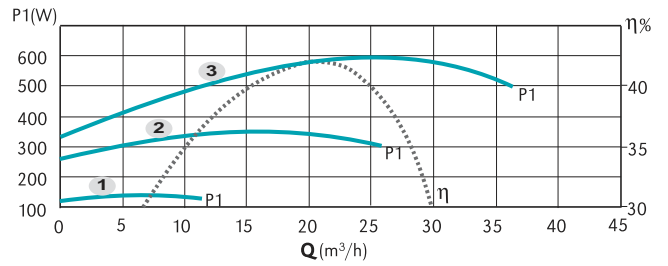
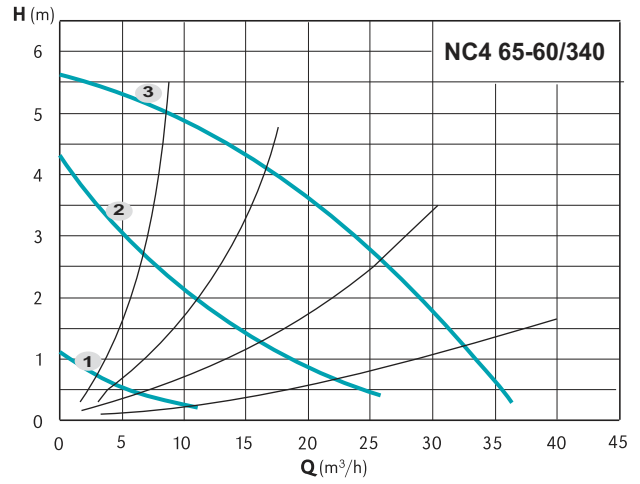
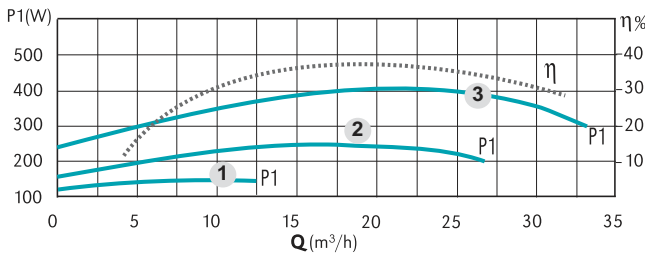
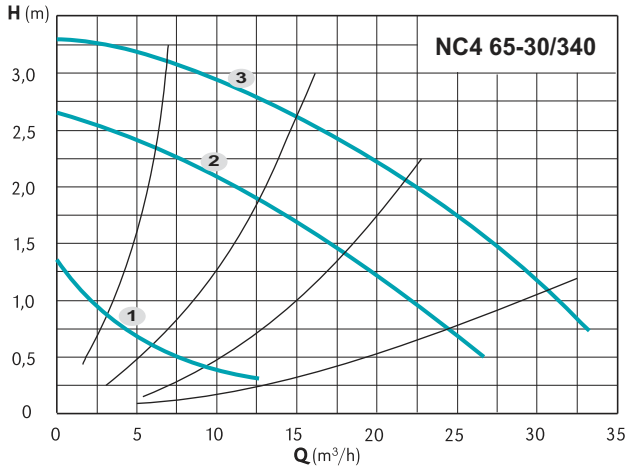
TYPE	DN	PN	N° Poli		Pos.	1/min	P1 (W)	3x 400 V [A]	[kg]
			2	4					
NC4 50-40/280	50	6/10	✓		3	1450	340	1,05	24,0
						620	120	0,22	
NC4 50-60/280	50	6/10	✓		3	1400	470	1,15	24,0
						1000	300	0,55	
NC 50-120/280	50	6/10	✓		3	2800	950	1,73	24,0
						2330	540	1,05	
					1	1270	265	0,46	

Characteristic curves, dimensions and weights



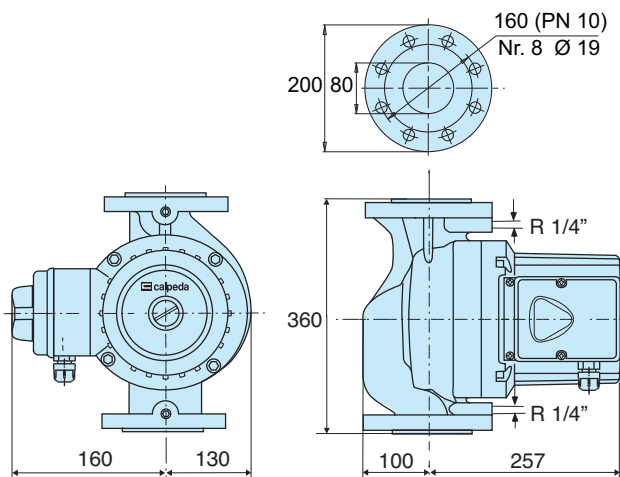
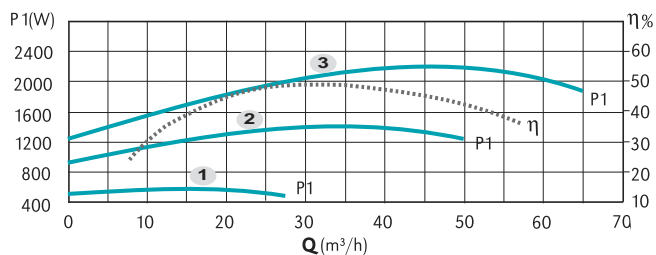
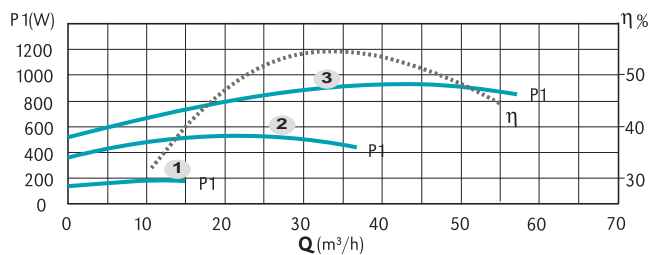
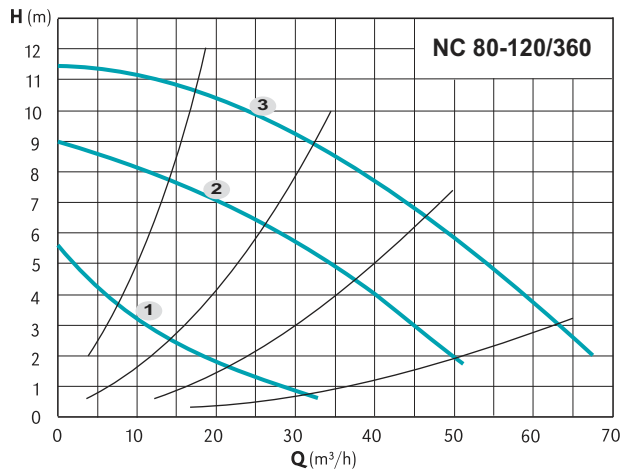
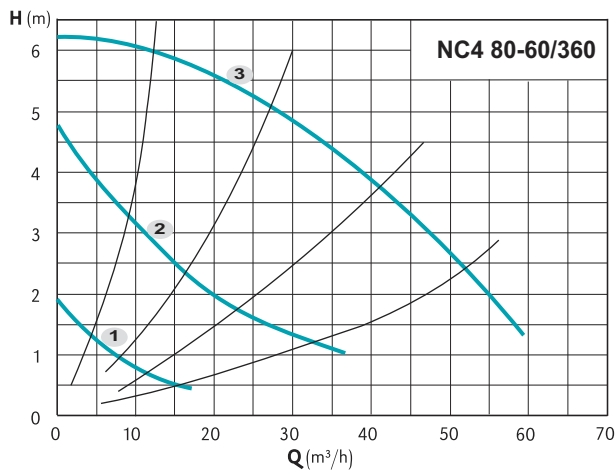
TYPE	DN PN		N° Poli		Pos.	1/min	P1 (W)	1x 230 V [A]	[kg]
	2	4	2	4					
NCM4 50-60/280	50	6/10	✓	3	1260	415	1,8	24,5	
				2	1030	300	1,3		
				1	740	230	1,0		
NCM 50-120/280	50	6/10	✓	3	2720	830	3,6	24,5	
				2	1870	480	2,1		
				1	1450	390	1,7		

Characteristic curves, dimensions and weights



TYPE	DN PN		N° Poli 2 4	Pos.	1/min	P1 (W)	3x 400 V [A]	[kg]
	DN	PN						
NC4 65-30/340	65	6/10	✓	3	1430	400	1,10	29,0
				2	1150	260	0,50	
				1	600	120	0,22	
NC4 65-60/340	65	6/10	✓	3	1370	600	1,25	29,0
				2	950	360	0,64	
				1	450	120	0,22	
NC 65-120/340	65	6/10	✓	3	2810	1560	2,80	31,0
				2	2200	960	1,70	
				1	1250	460	0,84	

Characteristic curves, dimensions and weights



TYPE	DN	PN	N° Poli		Pos.	1/min	P1 (W)	3x 400 V [A]	[kg]
			2	4					
NC4 80-60/360	80	10	✓		3	1350	960	2,20	33,5
					2	1000	560	1,10	
					1	600	200	0,38	
NC 80-120/360	80	10	✓		3	2800	2200	3,80	34,5
					2	2160	1400	2,40	
					1	1200	550	1,05	